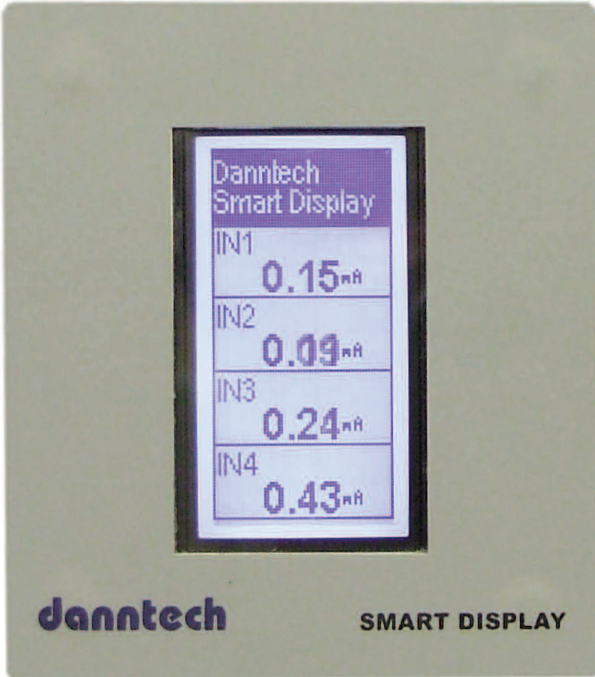
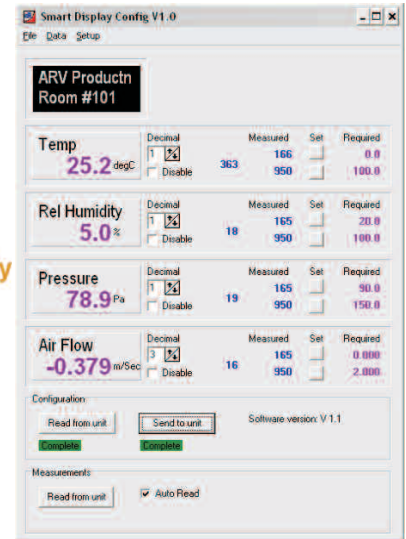


SMART DISPLAY



- **Display of up to four analogue inputs - 0-20 mA, 4-20 mA, 0-10 V DC, or ±10V (other inputs on request).**
- **4 digits with sign and configurable decimal point.**
- **Individual input isolation > 1000 VDC between each input and auxiliary supply.**
- **PC configurable labels, tags, units and scaling.**
- **Compact, convenient and economical.**
- **RS232 and RS485 interfaces available.**



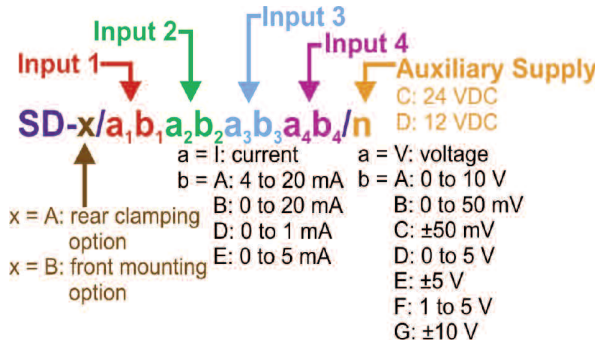
APPLICATIONS:

Distributed multi-input displays.

Process variable data acquisition with local display using Modbus or Danntech Remote Magic Protocol.

Low cost control systems.

PART NUMBERING:



SPECIFICATIONS:

- PC based configuration using RS232 and “easy to use” software to customize display label, tags, input scaling and calibration.
- LCD active display dimensions 38 x 70 mm, digit height approximately 12 mm.
- Accuracy better than 0.2% of full scale.
- ±10% over and under-range.
- Standard inputs 0-20 mA, 4-20 mA, ±10V, 0-10 V and other inputs on request.
- Input resistance of 50 Ω for 4-20 mA inputs.
- Backlight for clear display in low light, industrial environments.
- Auxiliary supply 24 VDC ±10% at 200 mA. (on request, 12 VDC models can also be supplied)
- Isolation between inputs, auxiliary power supply and optional RS485 interface >1000 VDC.
- Operating temperature -20°C to 60°C
- Front and rear fixing panel mounting options available.
- Rear access screw terminal connections.
- Panel cutout 104 x 114 mm (W x H).
- Dimensions 110 x 120 x 62 mm (W x H x D).
- *Customised applications include:*
Display and data logging.
Dedicated, low cost control systems.
Interface to any of the Danntech Remote Magic products.
- CE compliant.



Danntech cc
 Reg. No. CK86/15338/23
 Tel: + 27 (0)11 792-1239
 Fax: + 27 (0)11 792-4687
 P O Box 1023, Fontainebleau, 2032
 Republic of South Africa
www.danntech.com

Danntech ltd
 Co. No. 6510211
 Tel: +44 (0) 75 9069 1824
 15 College Close, Hamble-le-Rice
 Southampton, Hampshire, SO31 4QU
 United Kingdom
www.danntech.info