

SINGLE OUTPUT TRIP ALARM



The single output trip alarm provides improved functionality in a compact enclosure at an attractive price.

Transistor or relay output which can be configured to be either normally open or normally closed.

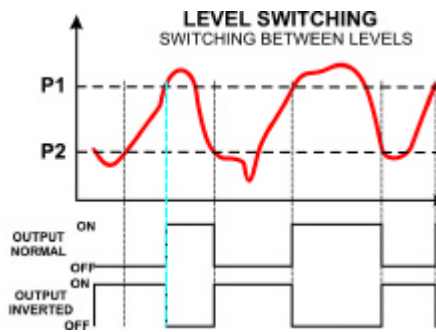
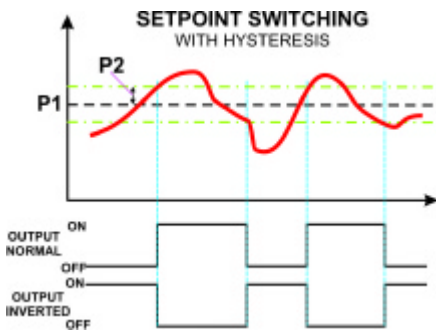
Initially available as 24 VDC or 12 VDC powered, mains powered version available soon.

Two modes of operation:

Setpoint Switching Mode - P1 sets the switching point and P2 the hysteresis.

Level Switching Mode - P1 sets the input value at which the output is on and P2 sets the value where the output is off.

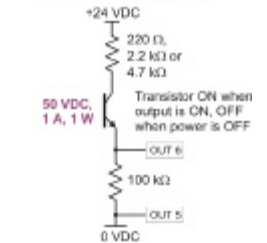
The output sense can be “normally open” or “normally closed” with the output indicator LED sense also configurable.



Relay Output



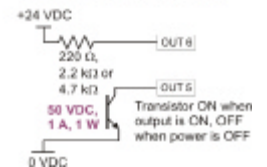
DC Voltage Output



Transistor Output



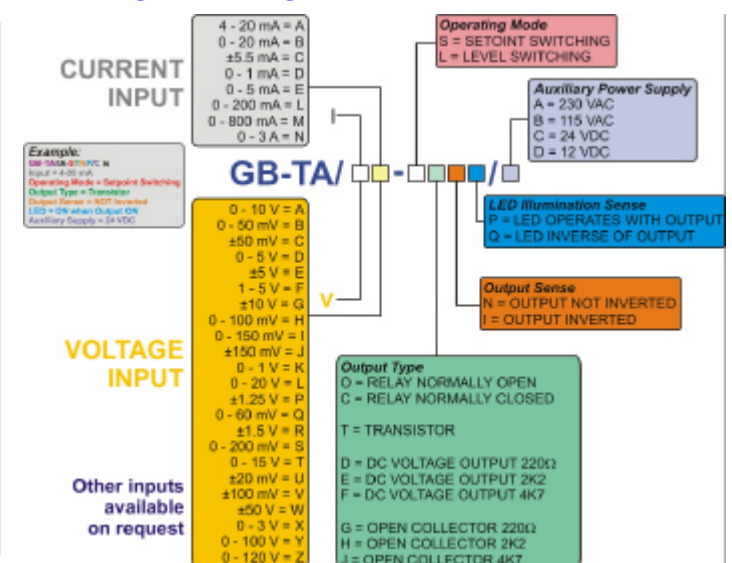
Open Collector Output



SPECIFICATIONS:

- Input signal ranges from ± 20 mV to ± 100 V and ± 1 mA to ± 5 A.
- Input impedance of >1 M Ω for the voltage input and 50 Ω or less for the current input models.
- Potential free relay contact or transistor output.
- Internal link selection of normally open or normally closed output.
- Contact rating 230 VAC or 30 VDC up to 5 A resistive load.
- Single-turn trimpot adjustment for switching setpoints on the front of the unit.
- Input supply 24 or 12 VDC $\pm 10\%$.
- Isolation between input, output and supply >1000 VDC.
- Operating temperature -10 to 60°C.
- Dimensions 20 x 80 x 85 mm (W x H x D).

PART NUMBERING:



Danntech cc

Reg. No. CK86/15338/23
 Tel: + 27 (0)11 792-1239
 Fax: + 27 (0)11 792-4687
 80 Maria Road, Fontainebleau, Randburg
 P O Box 1023, Fontainebleau, 2032
 Republic of South Africa
www.danntech.com